



AIR SURFER HYBRID USER MANUAL

Air Surfer Hybrid

AH210P / AH210N



CONTENTS

NAME OF EACH PART	1
FUNCTIONS AND OPERATION METHODS	2
POWER ON/OFF	2
AUTOMATIC POWER SAVING	2
USING BLUETOOTH MODE	2
HOW TO CONNECT AND SET UP BLUETOOTH ON WINDOWS	3
HOW TO CONNECT AND SET UP BLUETOOTH ON MACOS	4
HOW TO CONNECT AND SET UP BLUETOOTH ON ANDROID	5
HOW TO CONNECT AND SET UP BLUETOOTH ON IPADOS, IOS	6
CHARGING	9
SWITCHING OPERATING MODES BASED ON USAGE	9
BASIC MODE	10
PT MODE	16
CAUTIONS	21
SAFETY PRECAUTIONS	21
PRECAUTIONS FOR USE	21
SPECIFICATIONS	22
WARRANTY	23



- Please read this user manual before using it correctly.
- The contents of this manual may vary depending on the firmware version of the product and are subject to change without notice to the user. The contents of the firmware update will be announced on the BLD website.
- Product design/product specifications may be changed without notice for quality improvement.

NAME OF EACH PART



1	Laser Output	The part where the light is emitted when using the laser pointer.
2	Charging Status Indicator	It is an indicator light that shows the charging status when the charger is connected.
3	Motion Switch Button (Air/Ground Mode)	The button allows switching between Air Mode and Ground Mode.
4	OS Button (PT Mode/Laser Pointer)	It can be set to the same OS as the connected device from the three stored OS options, and it also supports switching to PT Mode and using the laser pointer.
5	Motion Status Indicator	The current status (Air/Ground Mode) is displayed. In Air Mode, the indicator light appears white. In Ground Mode, the indicator light turns off.
6	LED Mode Indicator	The current status (OS/PT Mode) is shown by the LED color, which blinks red when the battery is low.
7	Left Click Button	It works with the left-click button in Ground Mode, but not in Air Mode.
8	Right Click Button	It works with the right-click button in Ground Mode, but not in Air Mode.
9	Top Button/Touchpad Area	Functions can be used by clicking or touching the top area of the touchpad. For detailed features, please refer to the function table.
10	Left Button/Touchpad Area	Functions can be used by clicking or touching the left area of the touchpad. For detailed features, please refer to the function table.
11	Center Button/Touchpad Area	Functions can be used by clicking or touching the center area of the touchpad. For detailed features, please refer to the function table.
12	Right Button/Touchpad Area	Functions can be used by clicking or touching the right area of the touchpad. For detailed features, please refer to the function table.
13	Bottom Button/Touchpad Area	Functions can be used by clicking or touching the bottom area of the touchpad. For detailed features, please refer to the function table.
14	Power Switch	The power can be turned on or off using the switch.
15	Pairing Button	It is usable while the power is on, and all information of paired devices will be reset.
16	Charging Port	It charges via a USB Type-C connection.

FUNCTIONS AND OPERATION METHODS

POWER ON/OFF





Slide the **Power Switch** to the ON/OFF position to turn the power on or off.
When the power is on, the LED will blink. Once connected to the device, it will stay on.

AUTOMATIC POWER SAVING

If there is no button press, touch input, or mouse movement for 5 minutes, it will automatically switch to power-saving mode, and the LED will turn off. Pressing any button or moving the mouse will return it to active mode. Power-saving mode entry time can be adjusted in the app.

USING BLUETOOTH MODE

Depending on the operating system of the connected device, certain functions may vary. To ensure proper functionality, double-click the **OS Button** to select the Bluetooth mode appropriate for the target device. The selected Bluetooth mode can be confirmed via the **LED mode indicator**. The default OS version(Win/Mac) for each mode is indicated on the product packaging sticker or within the app. If necessary, the OS setting can be changed through the app.

② OS Button : Double Click		Green Mode(PC)	Blue Mode(Tablet)	Orange Mode(Smartphone)
				
Bluetooth Mode				
① LED Mode Indicator		● Green	● Blue	● Orange
Connected Name		A-Surfer Hybrid_G	A-Surfer Hybrid_B	A-Surfer Hybrid_O
Win ver. OS		Windows	Android	Android
Mac ver. OS		macOS	iPadOS	iOS

1. Pairing and Connecting

▣ Initial Pairing in Bluetooth Mode

- ① Turning on the device using the **Power Switch**.
- ② Double-click the **OS Button** to select the Bluetooth mode appropriate for the target device. The selected mode can be identified by the LED color.
- ③ The LED will blink, indicating that the device is attempting to pair.
- ④ In the Bluetooth settings of the target device, select 'A-Surfer Hybrid_G/B/O' to complete the pairing.
The LED will stop blinking once pairing is successfully completed.

▣ Registering and Switching Devices by Bluetooth Mode (Multi-Device Connection)

Up to three devices can be registered for each Bluetooth mode. To connect a device under a specific Bluetooth mode, select the corresponding mode and follow the same pairing steps as above. After registering up to three devices per mode, simply double-click the OS Button to switch modes. The device will automatically connect to the previously registered device for that mode.

2. Resetting Pairing Information

▣ Resetting Pairing for Each Mode

To delete the pairing information for a specific mode, select the desired Bluetooth mode, then press and hold both the Power Button and OS Button simultaneously. The LED will blink, and all pairing records for the selected mode will be cleared. The device will then enter pairing mode.

▣ Resetting Pairing for All Modes

To delete the pairing information for all modes, press and hold the Pairing Button on the bottom while the device is powered on. The LED will blink, and all registered pairing data will be erased. The device will then enter pairing mode.

FUNCTIONS AND OPERATION METHODS

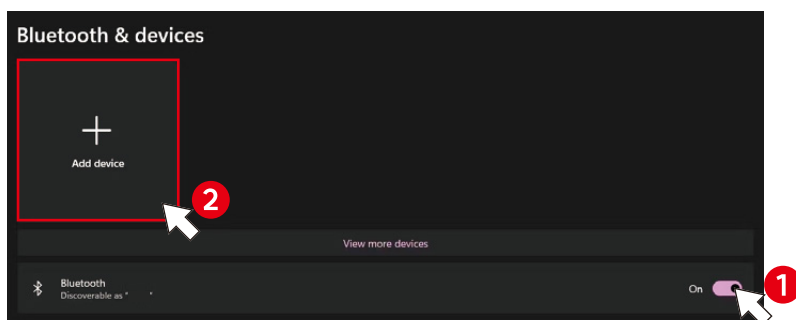
How to Connect and Set Up Bluetooth on Windows

1. Connect to Windows (on Windows 11)

- ① Turn on the Air Surfer and follow the steps below.
- ② Go to **Start > Settings > Bluetooth & Devices** or click **Bluetooth > Bluetooth & Devices**.



- ③ Ensure Bluetooth is turned on, then select **Add a device**.



- ④ On the **Add a device** screen, select **Bluetooth**, then find and connect to "A-Surfer Hybrid_G" from the list.



- ⑤ Wait until the PC displays "Paired" before leaving the screen.

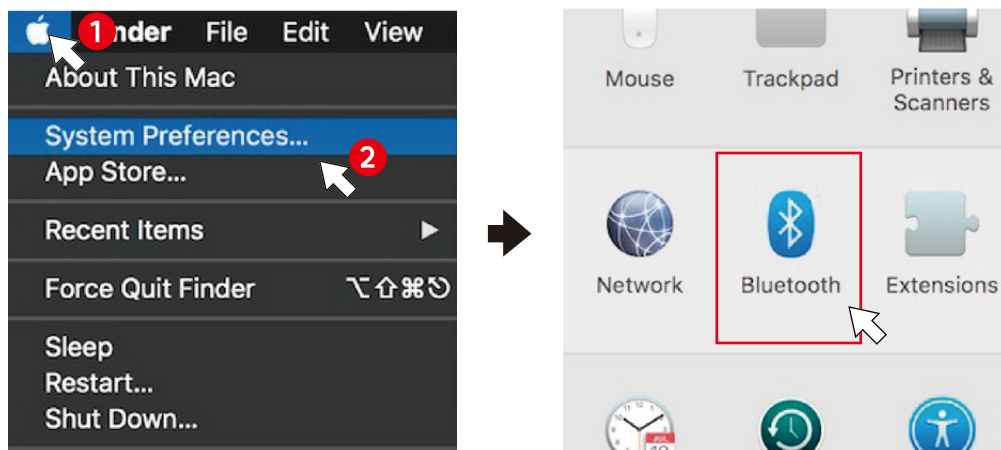


FUNCTIONS AND OPERATION METHODS

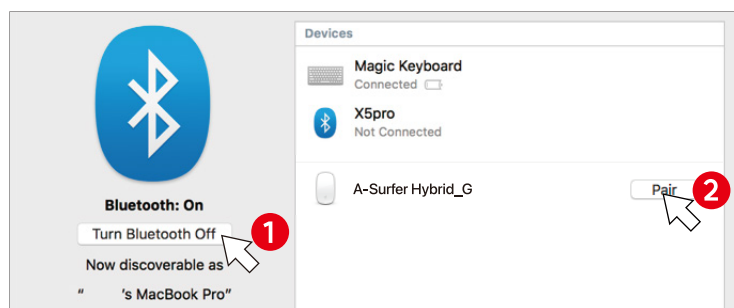
How to Connect and Set Up Bluetooth on macOS

1. Connect to mac OS

- ① Turn on the Air Surfer and follow the steps below.
- ② Go to **Menu > System Preferences > Bluetooth**.

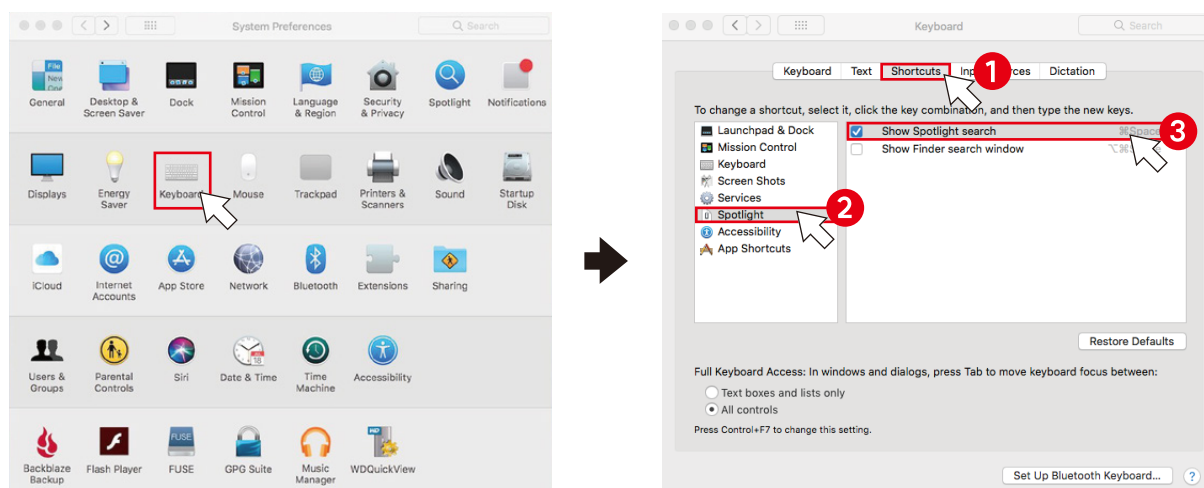


- ③ Turn on **Bluetooth**, then find and connect to "A-Surfer Hybrid_G" from the list of available devices.



2. Set up to excute the shortcut "Open URL"

- ① Go to **System Preferences > Keyboard**, then click the "Shortcuts" tab.
- ② Select **Spotlight > Show Spotlight Search** and Use it.

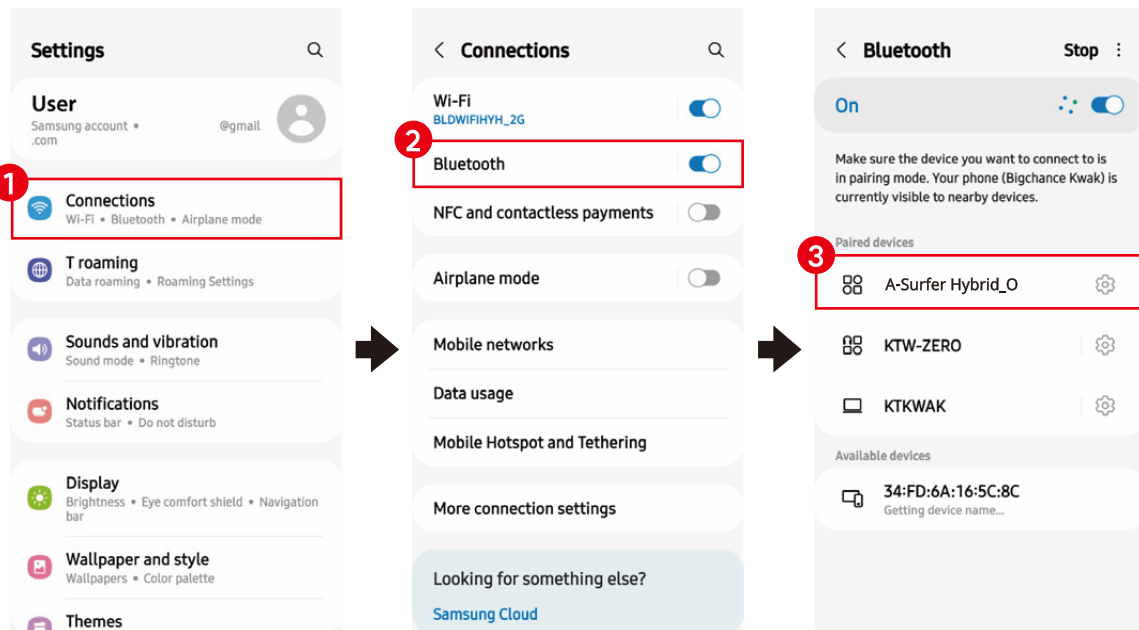


FUNCTIONS AND OPERATION METHODS

How to Connect and Set Up Bluetooth on Android

1. Connect to Android

- ① Turn on the Air Surfer and follow the steps below.
- ② Go to **Settings > Connections > Bluetooth**.
- ③ Turn on **Bluetooth**, then find and connect to "A-Surfer Hybrid_B/O" from the list of available devices.



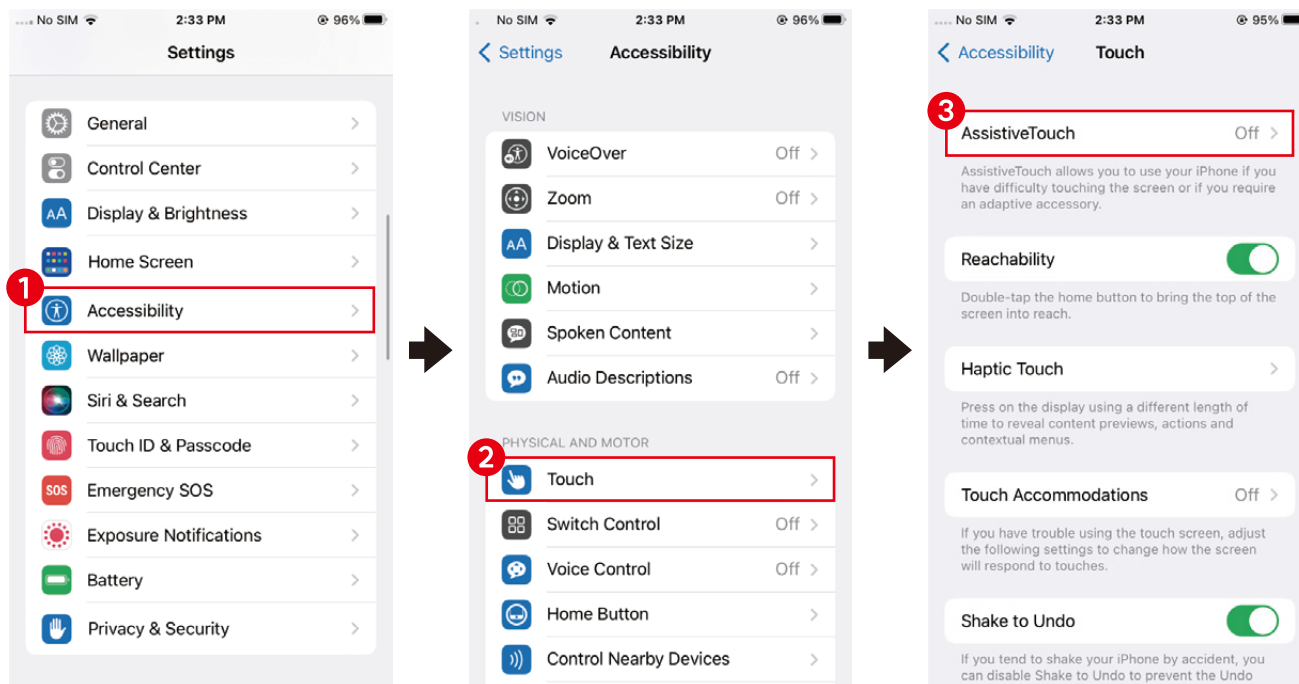
FUNCTIONS AND OPERATION METHODS

How to Connect and Set Up Bluetooth on iPadOS, iOS

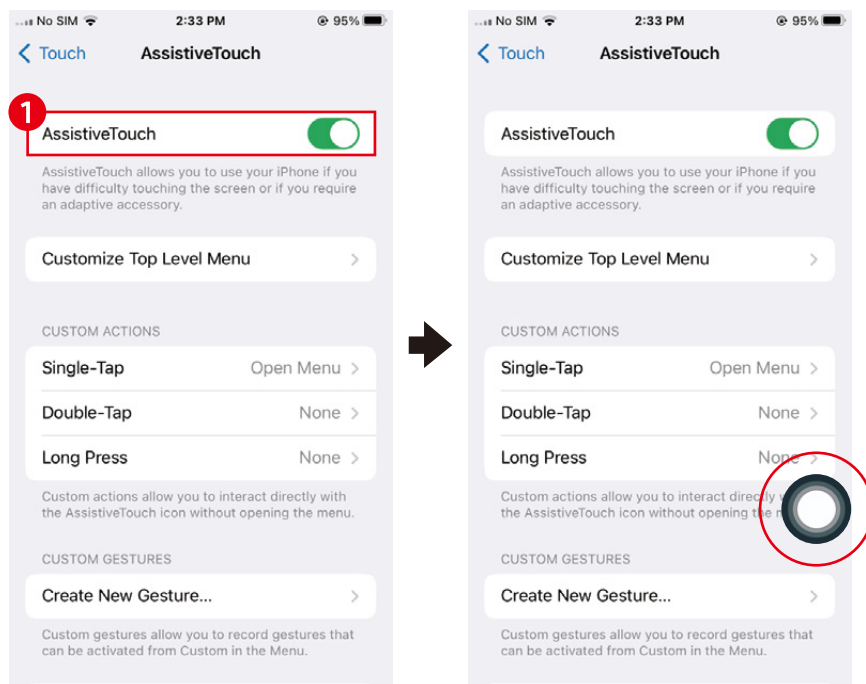
If the mouse pointer is not visible after connecting via Bluetooth, check the settings

1. Turn on the Assistive Touch(Mouse Pointer)

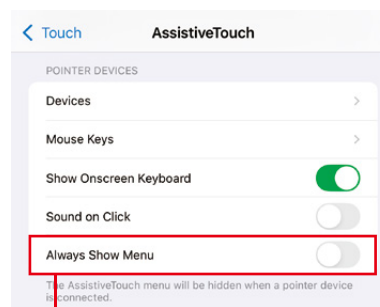
① Go to Settings > Accessibility > Touch > Assistive Touch.



② Turn on **AssistiveTouch**, and a menu button will appear below.



■ Hide Menu Button



Turn off "Always Show Menu", the menu icons will disappear.

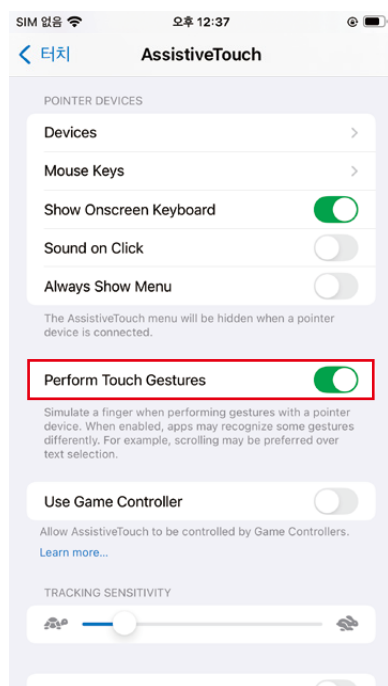
FUNCTIONS AND OPERATION METHODS

How to Connect and Set Up Bluetooth on iPadOS, iOS

If some swipe functions are not working, check the settings

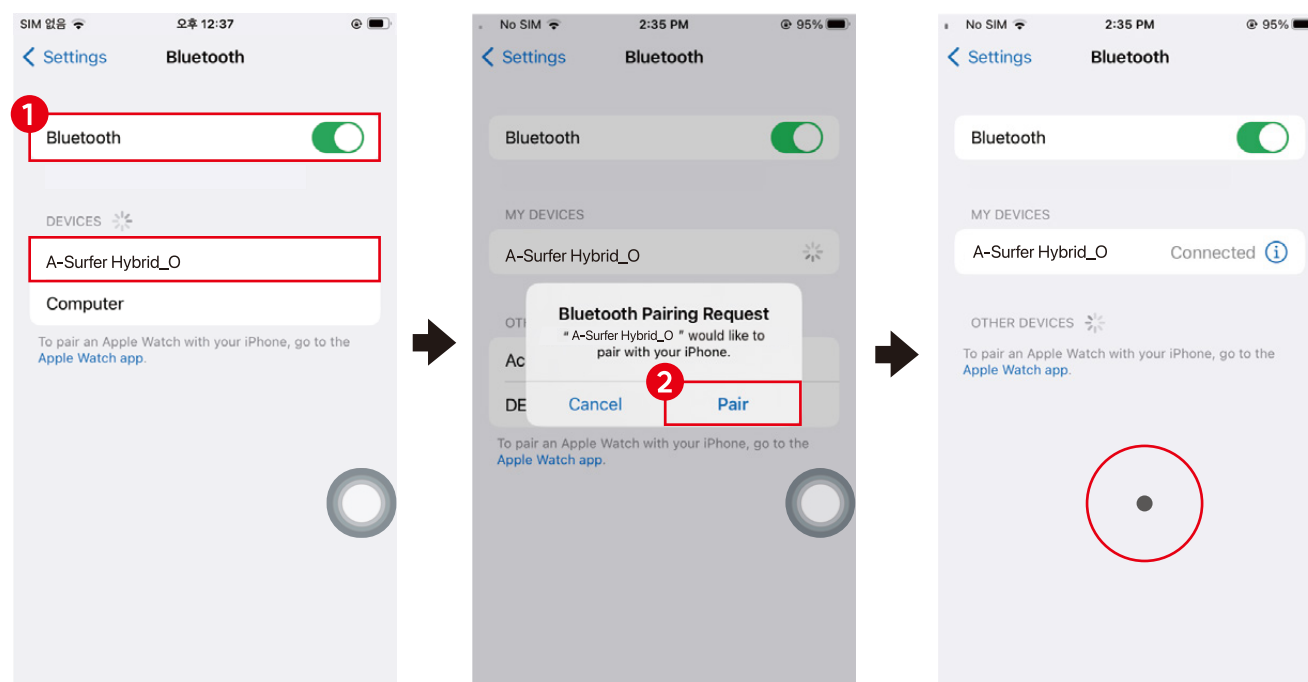
1-2. Turn on the “Perform Touch Gestures”

① Enable the **Perform Touch Gestures** option in **AssistiveTouch** for certain features to work properly.



1-3. Connect to iPadOS/iOS

- ① Go to **Settings > Bluetooth**, turn on **Bluetooth**, and select “A-Surfer Hybrid_O” from the list of available devices to connect.
- ② After the connection is established, the mouse pointer will appear on the screen.



FUNCTIONS AND OPERATION METHODS

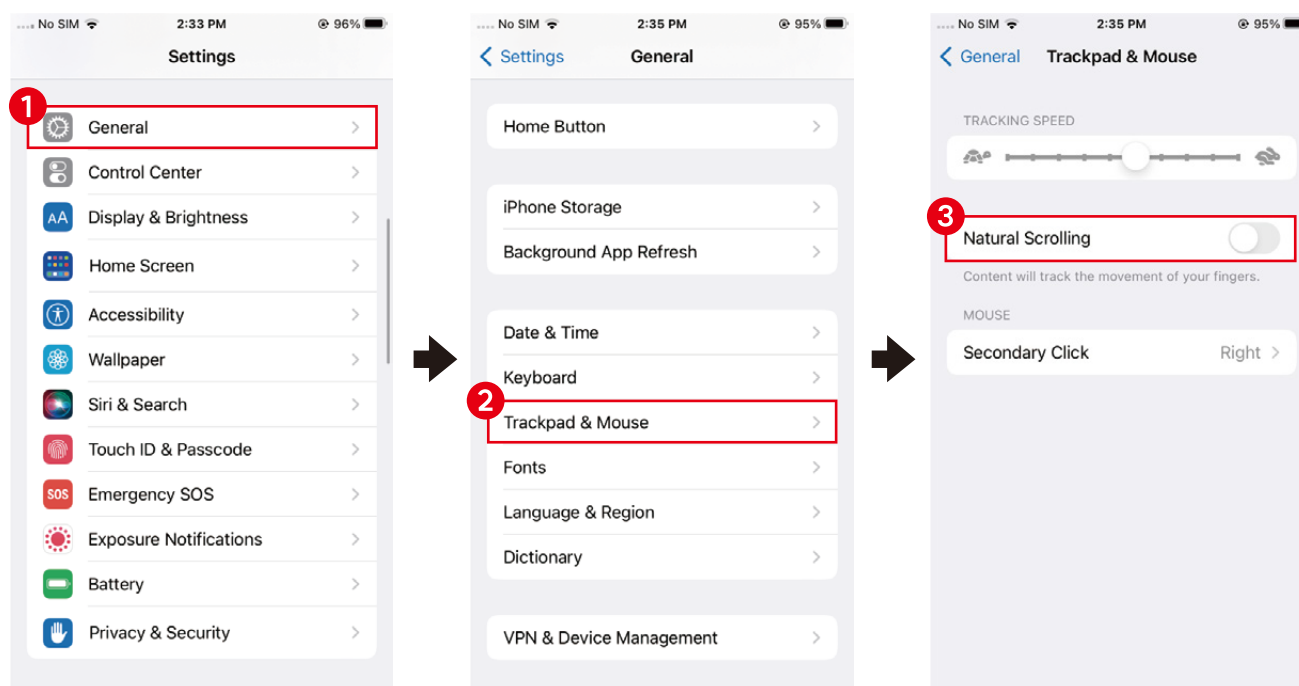
How to Connect and Set Up Bluetooth on iPadOS, iOS

If the scrolling seems to be reversed

2. Turn off the “Natural Scrolling” (Change scroll direction)

If Natural Scrolling is enabled, the content on the screen moves in the same direction as your fingers.
The **Trackpad & Mouse** section appears only when Bluetooth is connected.

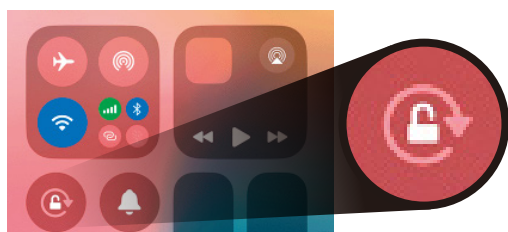
① Go to **Settings > General > Trackpad & Mouse**, and turn off **Natural Scrolling**.



If the mouse pointer and scrolling behave in an abnormal direction

3. Locking the screen orientation to Portrait Mode on an iPhone

Open the Control Center and tap the lock icon to enable “**Orientation Lock**”. The screen must be locked in vertical orientation for the cursor and scroll functions to work properly. To use it in horizontal orientation, disable the lock beforehand.




FUNCTIONS AND OPERATION METHODS

CHARGING

Charging cable : Use a USB Type-C cable to charge the device




When the battery is low, the LED Mode Indicator will blink red. When a charging cable (USB Type-C) is connected, the Charging Status Indicator will light up red, and charging continues till the light turns green. All functions are active while charging. Charging continues even when the power is turned off.

	① LED Mode Indicator	Status	② Charging Status Indicator	Status
	● Blinking Red	Battery is low	● Red	Charging
			● Green	Charging is complete

SWITCHING MOTION MODES BASED ON USAGE

Mode : Air Mode / Ground Mode

The device can switch between two modes : handheld use or placed use.
Double-click the motion switch button to toggle between Air/Ground Mode. The motion status indicator shows the currently active mode.

 ② Motion Switch Button : Double Click	① Motion Status Indicator	○ White	● LED Off
	Motion Mode	 Air Mode	 Ground Mode

BASIC MODE

Before using Basic Mode

① Check the Bluetooth mode before use

Check the **LED Mode Indicator** to confirm that the bluetooth mode has been changed to match the device before using it.

② Check if in a web browser or web browser app environment

Basic functions work in the default web browser or browser app. Some features may not work in apps other than the default browser.

③ Check if the "Wheel button click scroll" feature is turned on

Check if the "Wheel button click scroll" feature is enabled. If used outside the scroll area, the cursor may not work.

Tap the center or click the left button to turn off the feature.

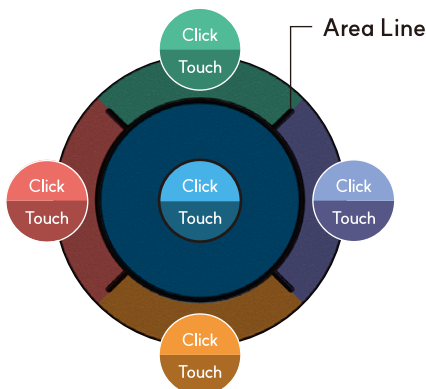
■ BASIC MODE TOUCHPAD FUNCTION CHART

Supported Browsers Chrome, Safari, Edge **Compatibility** Windows, macOS, Android(Tablet/Smartphone), iPadOS, iOS

The functions of the button (Click, Double-click, Long click) can be changed and configured in the Air Surfer app.

+ Connection Action

→ Following Action



Action	Function
Click	Go to previous page
Double click	Close the current tab 01
Long click	[PC] Close the current window [Tablet / Smartphone] Go to home screen 02
Single left(right)	[PC / Tablet / Smartphone] Volume control [Tablet / Smartphone] (Camera app) Camera shutter
Swipe left(right) + Swipe across Area Line	Automatic volume adjustment

01 On Windows with one tab open, 'Close current window' will close it.

02 On the desktop background, the system shutdown window appears.

On tablet/smartphone, the 'Go to the home screen' function is activated.

Action	Function
Click	Mouse left button click
Double click	Mouse left button double click
Long click → Drag[Center] → Click[Left]/Tap[Center]	Hold drag and drop
Swipe up(down)	[Fast scrolling] Vertical Scroll
Swipe up(down) + Swipe across Area Line	Auto continuous scroll (Vertical)

Action	Function
Click	Scroll down a webpage
Double click	Scroll up a webpage
Long click	Go to the top of the page
Tap	Mouse left button click
Double tap	Mouse left button double click
Tap and drag	Air mode Mouse pointer movement
Swipe up(down)	Ground mode Vertical Scroll
Swipe up(down) + Swipe across Area Line	Ground mode Auto continuous scroll (Vertical)
Double tap, then drag and drop	Drag and drop
Double tap, then drag + Click(in the direction of movement)	VR view rotation

Action	Function
Click	Open URL(Google) 04
Double click	Open URL(YouTube) 04
Long click	Switch keyboard (Language) 05
Swipe left(right)	[PC] Horizontal scroll
Swipe left(right) + Swipe across Area Line	[PC] Auto continuous scroll (Horizontal)
Swipe right	[Tablet / Smartphone] Move the screen right
Swipe left	[Tablet / Smartphone] Move the screen left

04 It works correctly when the keyboard is set to English.

05 It may not be supported depending on the keyboard type, and in some OS, it only works in input fields.

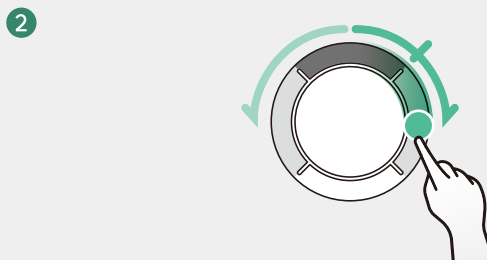
Action	Function
Click	Mouse right click
Double click	Screen capture
Long click → Swipe up(down) [Center] → Click[Left]/Tap[Center]	Wheel button click scroll 03
Swipe up(down)	[PC] [Slow scrolling] Vertical scroll
Swipe up(down) + Swipe across Area Line	[PC] Auto continuous scroll (Vertical)
Swipe down	[Tablet / Smartphone] Move the screen down
Swipe up	[Tablet / Smartphone] Move the screen up

03 The 'Wheel button click scroll' feature is enabled in the scroll area.
Web browser : The automatic scroll icon will appear.
Web browser app : The screen will shake briefly.

FUNCTIONS AND OPERATION METHODS

■ BASIC MODE – HOW TO USE THE BUTTON AND TOUCHPAD COMBINATION

Top Area



1 Volume control

Swipe right to increase the volume, and swipe left to decrease the volume.

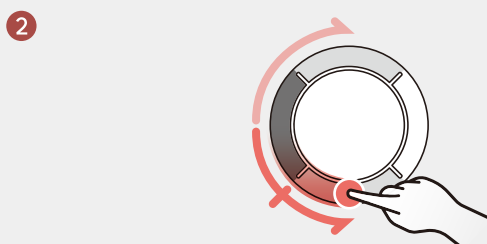
1 Camera shutter Works only on Tablet/Smartphone

Launch the camera app on a tablet or smartphone, swiping left or right activates the shutter.

1 + 2 Automatic volume adjustment

Swiping right beyond the right boundary causes the volume to keep increasing, while swiping left beyond the left boundary automatically decreases the volume.

Left Area



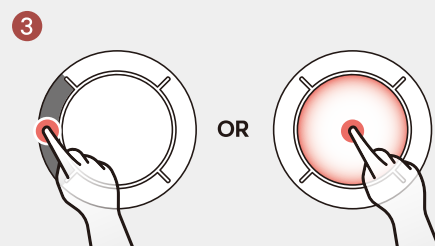
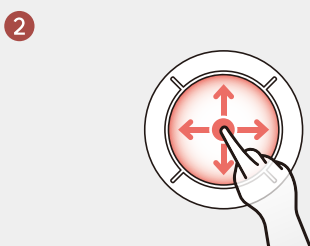
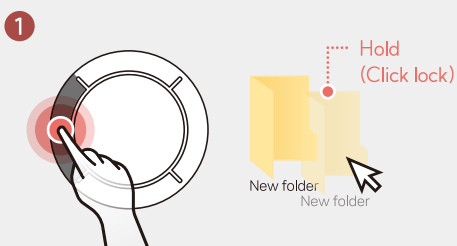
1 [Fast scrolling] Vertical scroll

Swipe down to scroll the screen downward, and swipe up to scroll upward.

- Android : On the home screen, you can navigate in all directions: up, down, left, and right.
- Windows, macOS : Use gestures to zoom in and out on Google Earth, maps, VR sites.

1 + 2 Auto continuous scroll(Vertical)

Swiping down beyond the bottom boundary causes the screen to continue scrolling downward, while swiping up beyond the top boundary makes the screen scroll upward



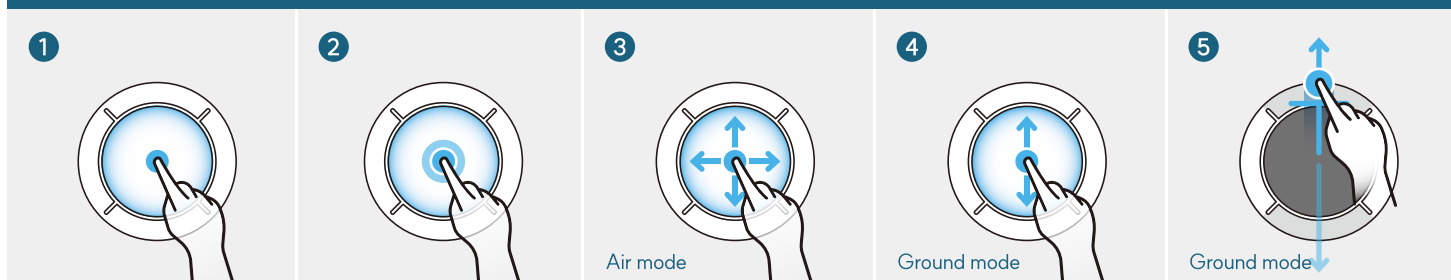
1 + 2 + 3 Hold drag and drop

With the hold(click lock) feature, long-clicking an item keeps it selected even after you release your hand.

Tap and hold the central area, drag the item to your desired location, and then click the left area or tap the center area again to drop it.

■ BASIC MODE – HOW TO USE THE BUTTON AND TOUCHPAD COMBINATION

Center Area

**1** Mouse left button click

Tapping performs basic actions such as selecting an app or file, opening a link, or running a program.

2 Mouse left button double click

Double-tapping allows you to open apps, files, folders, or launch programs.

3 Air mode Mouse pointer movement

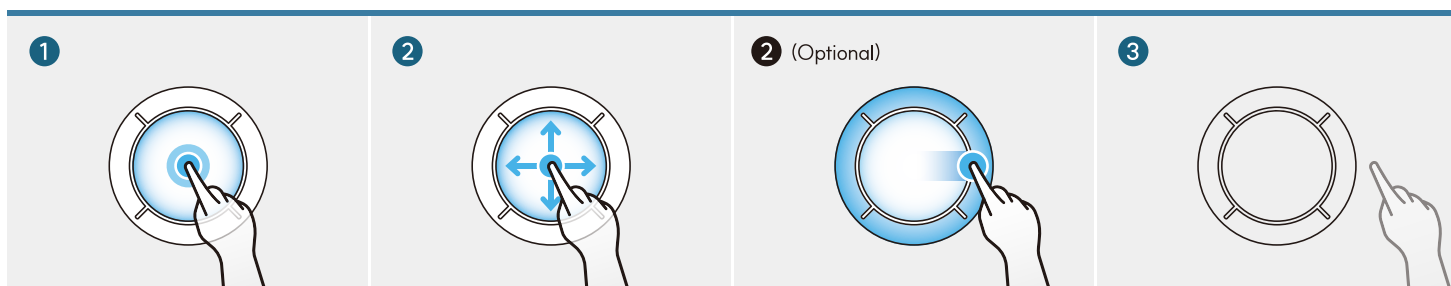
After tapping, you can move the pointer by keeping your finger on the screen and sliding it.

4 Ground mode Vertical Scroll

Same as the left area "Vertical Scroll" feature.

4 + 5 Ground mode Auto continuous scroll (Vertical)

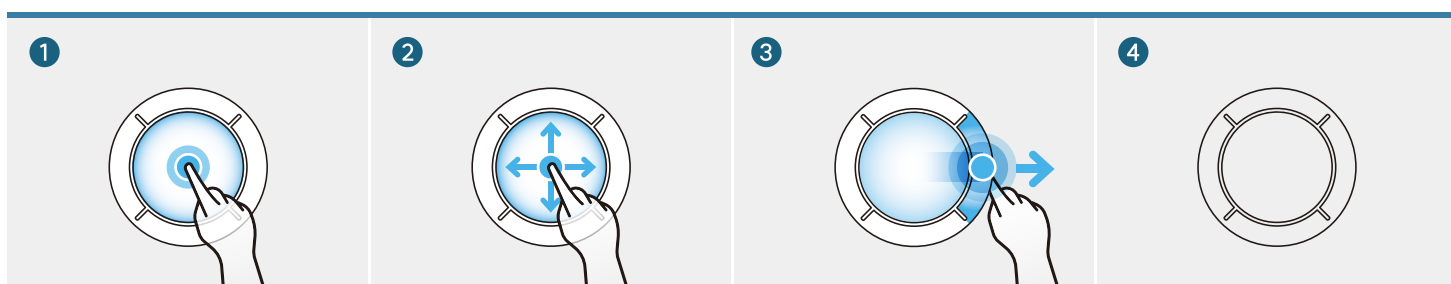
Same as the left area "Vertical Scroll" feature.

**1 + 2 + 3** Drag and drop (Can only be moved within the Center Area)

Double-tap the item to move it, then hold your touch and drag it to the desired location. Release your finger to drop the item when the movement is complete.

1 + 2 + 2 + 3 Auto drag and drop (Use the entire Touchpad Area)

Double-tap the item to move it, then hold your touch and drag it to the desired location. If your finger crosses a boundary during the movement, the item will continue moving in that direction. Release your finger to drop the item when the movement is complete.

**1 + 2 + 3 + 4** VR View Rotation

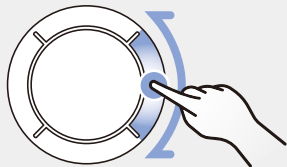
After double-tapping, hold your touch and drag. If your finger crosses a boundary during the movement, press and hold the button in that area to maintain the state. The screen will continue moving in that direction. Release your finger when the movement is complete.

- Android/iPadOS/iOS : On VR sites, it functions as view rotation, while on some sites and apps, it operates as screen navigation.
- Windows, macOS : Works on Google Earth, maps, VR sites, and more (not supported on certain sites or apps).

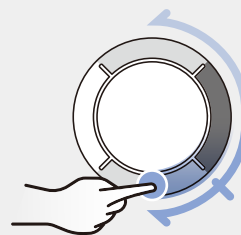
■ BASIC MODE – HOW TO USE THE BUTTON AND TOUCHPAD COMBINATION

Right Area

1



2

**1 [Slow scrolling] Vertical scroll** Works only on PC

Swipe down to scroll the screen downward, and swipe up to scroll upward.

· Windows, macOS : Use gestures to zoom in and out on Google Earth, maps, VR sites.

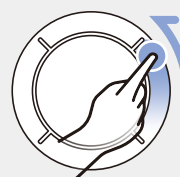
1 + 2 Auto continuous scroll (Vertical) Works only on PC

Swiping down beyond the bottom boundary causes the screen to continue scrolling downward, while swiping up beyond the top boundary makes the screen scroll upward.

1



2

**1 Move the screen down** Works only on Tablet/Smartphone

Swipe down to scroll the screen downward.

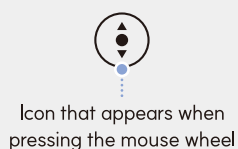
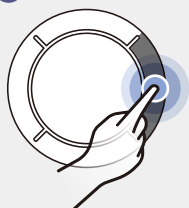
· Android : Works only on the YouTube app and the home screen.

2 Move the screen up Works only on Tablet/Smartphone

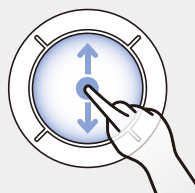
Swipe up to scroll the screen upward.

· Android : Works only on the YouTube app and the home screen.

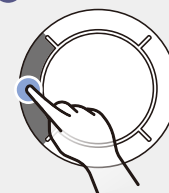
1



2



3



OR

**1 + 2 + 3 Wheel button click scroll**

When you long-press the button on the right side of the area you want to scroll, an icon will appear, or the screen will shake vertically, activating the 'Wheel button click scroll' feature. Swipe up(down) in the center area, and scrolling will continue at a speed proportional to the swipe.

To exit the feature, click the left area or tap the center area.

■ BASIC MODE – HOW TO USE THE BUTTON AND TOUCHPAD COMBINATION

Bottom Area

1



2

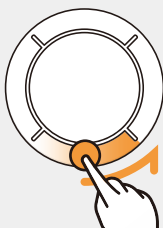
**1 Horizontal scroll** Works only on PC

Swipe left to scroll the screen leftward, and swipe right to scroll the screen rightward.

1 + 2 Auto continuous scroll(Horizontal) Works only on PC

Swiping right beyond the right boundary causes the screen to continue scrolling rightward, while swiping left beyond the left boundary makes the screen scroll leftward.

1



2

**1 Move the screen right** Works only on Tablet/Smartphone

Swipe left to scroll the screen leftward.

· Android : Works only on the YouTube app and the home screen.

2 Move the screen left Works only on Tablet/Smartphone

Swipe right to scroll the screen rightward.

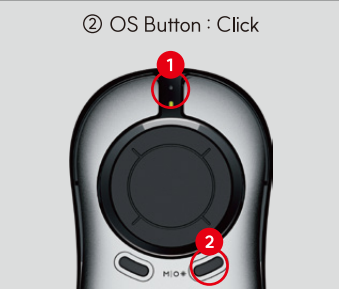
· Android : Works only on the YouTube app and the home screen.

FUNCTIONS AND OPERATION METHODS


PT MODE – AVAILABLE ONLY IN AIR MODE

PT Mode, designed for presentations, functions only in the “Slide Show” feature of MS PowerPoint.

In Basic Mode, PT Mode (●) is available only in the Windows/macOS (●) environment and can be activated with a single click of the **OS Button**.

	① LED Mode Indicator	Status	Win/And ver.	Mac/iOS ver.
	● Pink	PT Mode	Windows (PC)	macOS (PC)
	● ● ●	Basic Mode		

■ LASER POINTER/DIGITAL POINTER (AVAILABLE ONLY IN AIR MODE)

	Mode	Action	Function
	Basic/PT Mode	① Press and Hold	Turn on the Laser Pointer Depending on the model, some products may not include a laser pointer(✳)
	PT Mode	② Long Click (Toggle* ON)	Activate the Digital Pointer (Exclusive to PowerPoint slide show)
		② Long Click (Toggle* OFF)	Activate the Mouse Pointer

* Toggle : A key used to switch between two states, such as On/Off.

It operates only in Air mode, and can be used as a laser pointer and digital pointer.

① In Basic/PT mode, the laser pointer is activated only while holding down the OS button. Releasing the button turns off the laser pointer.

② In PT Mode, the digital pointer is only available in PowerPoint's “Slide Show”.

Press and hold the **OS Button** to switch the mouse pointer to a digital pointer, and press and hold it again to revert to the mouse pointer.

Before using PT Mode

① Check the Mode via the LED Mode Indicator before use.

Ensure the **LED Mode Indicator** switches from green(Windows/macOS–Basic Mode) to pink (PT Mode) before use.

② Check if the feature is used with the “MS PowerPoint” program

This feature works exclusively in “MS PowerPoint Slide Show” mode.

③ Check “Use Presenter View” settings

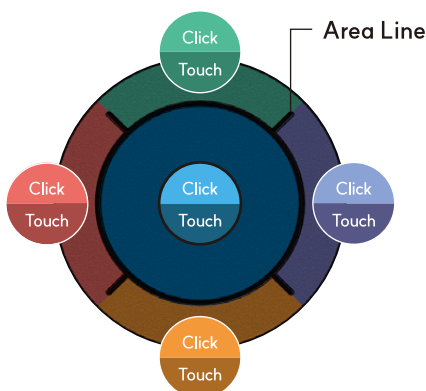
If “Use Presenter View” is enabled and the mouse pointer is not visible, move it left or right to make it appear.

If not needed, disable “Use Presenter View” in the [Slide Show] tab.

■ PT MODE TOUCHPAD FUNCTION CHART

Supported Program MS Power Point Compatibility Windows, macOS

+ Connection Action



Action	Function
Click	(Start a slide show) Start a presentation from the beginning
Double click	(Start a slide show) Start a presentation from the current slide
Long click	(End a slide show) End the presentation
Single left(right)	Volume control
Swipe left(right)+ Swipe across Area Line	Automatic volume adjustment

Action	Function
Click	Go to the next slide
Double click	No function
Long click	Show the arrow pointer
Swipe up(down)	[Fast scrolling] Go to the next slide/ Return to the previous slide
Swipe up(down)+ Swipe across Area Line	Auto continuously move to the previous/next slide

Action	Function
Click	Go to the next slide
Double click	Return to the previous slide
Long click	Return to the first slide
Tap	Go to the next slide
Tap and drag	Mouse pointer movement
Double tap	Go to the next slide
Double tap, then drag and drop	[When the pen/highlighter is turned on] Draw with pen(highlighter)

Action	Function
Click	Mouse right button click
Double click	[Windows] Show/hide ink markup★ [macOS] No function
Long click	Go to the last slide
Swipe up(down)	[Slow scrolling] Go to the next slide/ Return to the previous slide
Swipe up(down)+ Swipe across Area Line	Auto continuously move to the previous/next slide

★ Ink markup : Lines drawn with a pen/highlighter

Action	Function
Click	[Windows] Pen on/off [macOS] Pen on(no off)
Double click	[Windows] Highlighter on/off [macOS] No function
Long click	Erase on-screen all ink markup★ 01)
Single left(right)	[When the pen/highlighter is turned on] Draw a straight line with the pen (highlighter)
Swipe left(right)+ Swipe across Area Line	[When the pen/highlighter is turned on] Continue drawing a straight line with the pen (highlighter)

★ Ink : Lines drawn with a pen/highlighter

01) When using Windows 10,
it must be run while in the English keyboard layout.

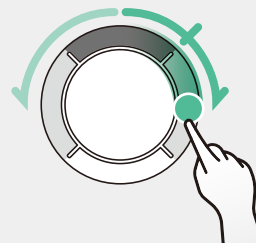
■ PT MODE – HOW TO USE THE BUTTON AND TOUCHPAD COMBINATION

Top Area

1



2



1 Volume control

Swipe right to increase the volume, and swipe left to decrease the volume.

1 Camera shutter

Works only on Tablet/Smartphone

Launch the camera app on a tablet or smartphone, swiping left or right activates the shutter.

1 + 2 Automatic volume adjustment

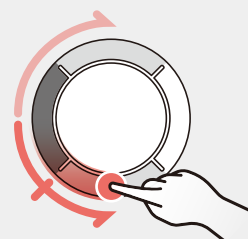
Swiping right beyond the right boundary causes the volume to keep increasing, while swiping left beyond the left boundary automatically decreases the volume.

Left Area

1



2



1 [Fast scrolling] Go to the next slide / Return to the previous slide

Swipe down to move to the next slide, and swipe up to move to the previous slide.

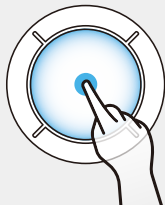
1 + 2 Auto continuously move to the previous/next slide

Swiping down beyond the bottom boundary moves to the next slide, while swiping up beyond the top boundary moves to the previous slide.

■ PT MODE – HOW TO USE THE BUTTON AND TOUCHPAD COMBINATION

Center Area

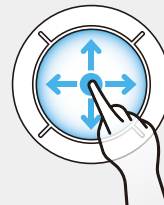
1



2



3

**1 Go to next slide**

Tap to move to the next slide.

2 Go to next slide

Double-tap to move to the next slide, just like a single tap.

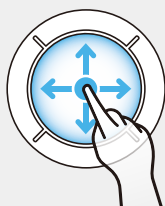
3 Mouse pointer movement

After tapping, you can move the pointer by keeping your finger on the screen and sliding it.

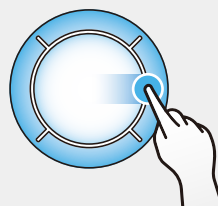
1



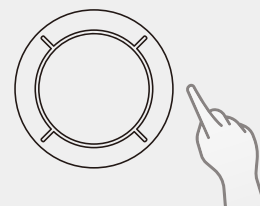
2



2 (Optional)



3

**1 + 2 + 3 Draw with pen(highlighter)** Works only when the pen/highlighter is enabled

Double-tap at the desired position to start a line, then hold and move your finger to draw the desired shape. Release your finger to finish.

1 + 2 + 2 + 3 Auto continuous draw straight lines with the pen (highlighter). Works only when the pen/highlighter is enabled

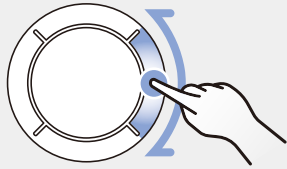
Double-tap at the desired position to start drawing a line. Hold and move your finger to create the desired shape or line.

If your finger crosses a boundary, the line will extend in that direction. Release your finger to finish.

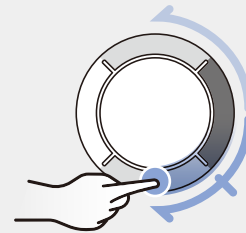
■ PT MODE - HOW TO USE THE BUTTON AND TOUCHPAD COMBINATION

Right Area

1



2

**1 [Slow scrolling] Go to the next slide / Return to the previous slide**

Swipe down to move to the next slide, and swipe up to move to the previous slide.

1 + 2 Auto continuously move to the previous/next slide

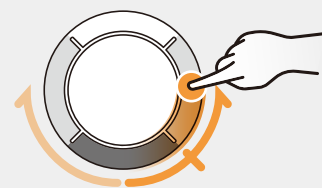
Swiping down beyond the bottom boundary moves to the next slide, while swiping up beyond the top boundary moves to the previous slide.

Bottom Area

1



2

**1 Draw a straight line with the pen(highlighter)** Works only when the pen/highlighter is enabled

Swipe left to draw a straight line to the left, and swipe right to draw a straight line to the right.

1 + 2 Continue drawing a straight line with the pen (highlighter) Works only when the pen/highlighter is enabled

Swiping right beyond the right boundary will extend the line to the right, while swiping left beyond the left boundary will extend the line to the left.

CAUTIONS

SAFETY PRECAUTIONS

⚠ WARNING A product that has a built-in battery may cause accidents such as fire or explosion, product damage, or personal injury.

- Be careful not to shock or damage the product.
- Please use a charger that has been certified.
- Do not insert or drop any metallic particles, flammable items, or foreign substances into the charger connection.
- If a smoke or burning smell occurs, please immediately stop using it and contact the person in charge Of A/S (After-sales service).
- Be careful not to let children or pets bitten the product.
- If the temperature is either low or high, the product may be damaged, or the battery life may be shortened.

⚠ WARNING Air Surfer equipped with laser pointer features have a built-in laser pointer. Therefore, it is important to observe the following warnings and safety guidelines, as with all laser pointers, to avoid injury.

레이저 방사선 – 직접적인 눈 노출을 피하세요.

클래스 2 레이저 제품

CLASS 2 LASER RADIATION – DO NOT STARE INTO BEAM

Output $\leq 1\text{mW}$

This product is safe with an output of 1mW or less, but avoid direct eye exposure or staring into the beam.

- Do not shine the laser pointer directly into the eyes or body of people or animals. It can cause glare, temporary vision impairment, or long-term damage.
- Do not aim the laser at mirrors or reflective surfaces. Reflected light can also be harmful to the eyes.
- The laser pointer should only be used on inanimate objects; it is not a toy.
- Ensure that minors do not use the laser pointer without supervision.

PRECAUTIONS FOR USE

- Be careful not to touch with water or contaminate with dust.
- Service support is unavailable for self-repair or arbitrary disassembly.
- A fee may be charged in the event of damage caused by impact, even during the warranty period.
- If normal pairing does not work, please turn off the power, then turn it back on, and try again. It may fail due to disparities in wireless device characteristics and Bluetooth versions.
- The Bluetooth wireless standard can be used within a distance of up to 10m. However, interference may occur due to obstacles, devices using the same frequency band, or Wi-Fi signals, which can cause disconnection.
- The usage time of this product may vary depending on the environmental conditions in which it is used.
- Maintain the proper temperature with products including batteries. The battery life may be shortened if it is stored or used at a temperature higher or lower than the appropriate temperature.

SPECIFICATIONS

Classification	Bluetooth wireless device
Product Name	Air Surfer Hybrid
Model	AH210P(Built-in Laser Pointer) / AH210N(No Laser Pointer)
Bluetooth	5.0 / 2.4GHz
Bluetooth Range	10m
Dimension(W x H x D)	60.9 x 104.4 x 29.9 mm
Weight	75g
Battery	Lithium polymer
Power Supply	DC 5.0V±5%
Transmit Power	Up to 10mW(EIRP)
Storage Temperature	-15°C ~ +60°C
Operating Temperature	-10°C ~ +40°C
In the Box	Air Surfer Docking Union, Warranty Card, Quick Start Guide
Supported OS	Windows 10 and newer / macOS 10.13 and newer Android 8 and newer / iOS 14 and newer / iPadOS 14 and newer
Certification Number	
Certified by	BLD Co., Ltd.
Warranty Information	1 year limited warranty

※ Design and specifications are subject to change without notice to improve performance

WARRANTY

Thank you for buying BLD Air Surfer Product.

In accordance with the consumer policy, BLD guarantees following conditions.

In-warranty service :

- 1) The product warranty period is valid for one year from the date of purchase.
- 2) Repair service will be provided in case the product malfunctions during proper use within the warranty period.
If repair is impossible, it will be exchanged with the same new product.

Out-of-warranty service :

- 1) Out of warranty period
- 2) In warranty period
 - Failure or damage caused by improper use or physical pressure (e.g. movement, fall, shock, excessive use, etc.) of the consumer.
 - Failure or damage caused by natural disaster (e.g. fire, gas, storm, flood, earthquake, lightning, etc.).
 - Damage of serial number that the warranty period cannot be confirmed.

- The warranty does not cover repair of any failure or damage caused by unauthorized modification or alteration (e.g. disassemble, repair, etc.).
- In case of product failure, please contact the customer service center or website of BLD cited below.

Product(Model)	Air Surfer Docking Union(AH210P / AH210N)		
Serial No.			
Warranty Period	One year from the date of purchase		
User Info	Customer Name		Customer Phone
	E-mail		
	Mailing Address		
Product Info	Purchase Date		
	Offline Store		
	Online Store		
Note			



BLD Co., Ltd.

B-414, DMC Hi-Tech Industry Center, 330, Seongam-ro, Mapo-gu, Seoul, 03920, Republic of Korea
support@bldkorea.com / www.bldkorea.com